

PEMs 2000

Predictive Emissions Monitoring System

PEMs Overview

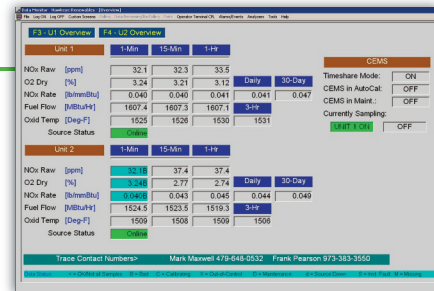
Satisfy your stack monitoring requirements at a lower cost.

The Trace PEMs enables users to fully comply with continuous stack monitoring requirements with simply a PC and software. This solution is a low cost/no maintenance alternative to traditional CEM systems and is guaranteed to be fully compliant and to pass RATA certification.

On a single PC we couple the industry proven statistical hybrid PEMs data engine with our DAS 2000 software for monitoring, alarming, data storage and reporting. And with this approach, facilities do not need the hardware, maintenance and costs associated with traditional CEMs (no need for probes, sample lines, CEM cabinets, analyzers, PLC's, solenoid valves, calibration gases, etc). The PEMs is a low risk, low cost approach to satisfying regulatory requirements for continuous stack monitoring and the annual savings in maintenance costs, spare parts and operator time repeats year after year.

System Features

- Easy to use fully compliant PEMs and DAS Software
- 40 CFR Part 60 (PS-16) and Part 75 (Subpart E)
- High reliability and up times
- No parts, probes, analyzers, calibration gases required
- Lower upfront cost than CEMs
- Easy hand shaking to plant SCADA and DCS and OSI PI
- Easy CEM replacement (runs in parallel during check out)



Data Summary Report

Company: **TRACE Environmental Systems, Inc.**

Data Group: BI RA 60-n Data
 Report Name: No Title
 Start of Report: 04/01/2011 00:00
 End of Report: 04/01/2011 23:59

Group/Channel #	04-C2	04-C3	04-C10	04-C11	04-C12	04-C16	04-C19
Long Descrip	60-n NO	60-n NO	60-n NO	60-n NO	60-n NO	60-n NO	60-n NO
Short Descrip	A-011	A-02	A-03	A-04	A-05	A-06	A-07
Unit #	103hr	1000/hr	5	ppm	1/hr	1/hr	1/hr
Range	0-1800	0-3800	0-25	0-200	0-2	0-200	0-1600
04/01/2011 00:00	0.0	1100	4.43	48.1	0.057	7.4	107
04/01/2011 01:00	0.0	1100	4.45	48.2	0.057	7.4	106
04/01/2011 02:00	0.0	1100	4.45	47.8	0.058	7.5	106
04/01/2011 03:00	0.0	1100	4.45	44.9	0.059	7.6	107
04/01/2011 04:00	0.0	1100	4.44	45.2	0.060	7.6	106
04/01/2011 05:00	0.0	1100	4.43	45.3	0.060	7.6	106
04/01/2011 06:00	0.0	1100	4.45	45.6	0.060	7.9	107
04/01/2011 07:00	0.0	1100	4.44	46.0	0.061	7.9	106
04/01/2011 08:00	0.0	1100	4.43	45.8	0.060	7.8	106
04/01/2011 09:00	0.0	1085	4.50	46.2	0.061	7.8	105
04/01/2011 10:00	0.0	1100	4.45	47.4	0.061	7.8	109
04/01/2011 11:00	0.0	1105	4.43	47.4	0.061	7.8	109
04/01/2011 12:00	0.0	1100	4.43	47.4	0.061	7.8	109
04/01/2011 13:00	0.0	1090	4.43	47.4	0.061	7.8	109

EXCESS EMISSIONS REPORT

Company: **TRACE Environmental Systems, Inc.**

Stack ID: Boiler A
 START Date/Time: 04/01/2010 00:00
 Data Group/Channel: BI RA 60-n Data(A-NOx)
 Total Hours in Period: 4392
 Filter For Valid Data: YES
 Filter For Source On-Line: YES

Stop Date/Time: 09/30/2010 23:59
 Search Val: 0.010
 Greater or Less Than Search Val: GREATER THAN
 Result Period All Or Block: BLOCK

Start of Period	End of Period	Duration (hrs)	Avg Value	Reason	Action
04/01/2010 00:00	04/04/2010 07:00	79.00	44.2	Exceeded Setpoint	Ramped Down Load
04/05/2010 07:00	04/15/2010 12:00	245.00	43.9	Exceeded Setpoint	Ramped Down Load
04/16/2010 13:00	05/26/2010 11:00	962.00	42.2	Exceeded Setpoint	Ramped Down Load
05/26/2010 12:00	06/22/2010 07:00	643.00	37.5	Exceeded Setpoint	Ramped Down Load
06/22/2010 08:00	07/19/2010 14:00	646.00	37.3	Exceeded Setpoint	Ramped Down Load
07/20/2010 07:00	08/25/2010 13:00	870.00	35.7	Exceeded Setpoint	Ramped Down Load
08/26/2010 14:00	08/26/2010 07:00	17.00	36.5	Exceeded Setpoint	Ramped Down Load
08/26/2010 08:00	09/07/2010 10:00	282.00	39.0	Exceeded Setpoint	Ramped Down Load
09/07/2010 11:00	10/01/2010 00:00	565.00	37.0	Exceeded Setpoint	Ramped Down Load
TOTAL DURATION =			4329.00		

REASON CODE SUMMARY (1-8)
 Unknown Causes: 4,329.00

About Trace Environmental Systems

Since 1995 Trace has been providing the highest quality of continuous stack monitoring and reporting systems along with support services. Trace provides CEMs, PEMs, reporting software, rental CEMs, stack flow meters and support services including on site PM, CGA and RATA along with phone and remote access and report generation.